

KENYA MUSEUM SOCIETY



TRACKER

August 2018



Thimlich Ohinga, Kenya's newest World Heritage Site.

Photo Ebrahim Mwangi

Copyright: National Museums of Kenya

Kenya Museum Society

P.O. Box 40658 - 00100 Nairobi, Kenya

Info@kenyamuseumsociety.org

www.kenyamuseumsociety.org

Tel: 2339158 (Direct)

Tel: 8164134/5/6 ext 2311

Cell: 0724255299



DRY ASSOCIATES LTD

Investment Group



INVEST IN YOUR FUTURE...
INVEST WITH
DRY ASSOCIATES LTD

WWW.DRYASSOCIATES.COM • INVEST@DRYASSOCIATES.COM • 0705 799 971 • 0738 253 811

Contents

Kenya Museum Society News

Trips and Events	1
<i>Weekend or overnight trips</i>	1
Ol Pejeta September 8-10	1
Mpala Ranch in Laikipia, November 16-18	2
<i>Day or half-day outings</i>	3
Ol Donyo Sabuk National Park Saturday 25 August	4
Behind the Scenes Visit – Palaeontology & Archaeology.....	5-6
➤ How to book for trips	6
Message from our new Lectures and Events organiser, Herman Bigham.....	6
Talks	7
Saturday, 11 August 2018, Muthaiga Country Club, 7 pm “Saving the Mountain Bongo from Going Extinct!” by Donald Bunge.....	7
Saturday 18 August, 2018, Nairobi National Museum, Louis Leakey Auditorium "Gorillas in the midst of war: health studies on one of our closest relatives" by Prof. John E Cooper and Dr. Margaret E Cooper.....	8
Saturday 1 September, 2018 Louis Leakey Auditorium "From hippos to humans: The Turkana Basin fossil record" by Dr Fredrick Kyalo Manthi.....	9
Saturday, 29 September 2018 Muthaiga Country Club, “Communities and Wildlife Ecosystems: Conundrum or Opportunity” by Colin Church	10
Affordable Art Show: Getting ever closer!	11
(includes call for volunteers!)	
Call for artists	12
Past KMS events	15
<i>Accounts by wasafiri</i>	
“Stepping back into pre-history at Ologesailie” by Kari Mutu.....	15
“Lake Ol Bolossat & Menengai Crater, July 2018” Nanette Nelson .	17
@ The Museum Shop	21
Annual second hand book sale	22

Article: “A rare sighting of an intra-Africa Migrant bird near Nairobi!” by John Wanyoike	23
Note on KMS Membership	24
At or About the Museums of Kenya	25
<i>Events and Exhibitions:</i>	25
Opening of the Aquarium and Hall of Fishes	25
August art exhibitions at the National Museum	27
<i>World Heritage Site News</i>	28
KMS: Membership benefits and application form	31-32

Kenya Museum Society News

Trips and events

Longer Trips

Lake Turkana and the Chalbi Desert

24 August – 2 September, 2018

Booking for this great trip are now closed.

Weekend or overnight trips

OI Pejeta, September 8-10

Join us for a weekend getaway to OI Pejeta from September 8-10. We'll spend two nights at Pelican House and explore the 90,000 acre OI Pejeta Conservancy with its diversity of wildlife species including the largest black rhino sanctuary in East Africa. The Conservancy contains the Sweetwater Chimp Sanctuary for orphaned, abandoned, and rescued chimps; the Morani Information Centre; the rhino memorial as well as other points of interest. It is Big Five habitat that is managed by integrating cattle ranching as an ecological tool. The proceeds from OI Pejeta fees go to community development programmes.

Pelican House where we'll stay was refurbished in May. The house overlooks the Pelican Dam and has traditional African colonial architecture with a large living room for socializing. It is a self-catering guest house and cottage that has spectacular views of Mt. Kenya.

Date: Friday, September 8- Sunday, September 10

Cost: 15,000 Kshs for adults pp; 9,000 Ksh for children under 12 years

Included: FB, lodging. **Cost excludes** Transportation costs and entrance fees.

EA Citizen Adult	Ksh 1,100	EA Citizen Child	Ksh 1,100
EA Resident Adult	Ksh 2,200*	EA Resident Child	Ksh 300
Vehicle fees: 400 Ksh for vehicle with under 6 seats and 1,200 Ksh if 6-14.			

* Corrected from last Tracker: apologies - ed.

** Ol Pejeta has gone cashless. You can pay with M-Pesa or a credit card at the Rongai entrance gate or pay your entrance fee online at <http://www.olpejetaconservancy.org/book-now-page/>

- When you sign up-
 - Indicate transportation status when signing up: if you will be driving, if can take passengers, or if you need transportation. Van transportation can be arranged if needed.
 - Indicate if you are a vegetarian or have food allergies.

There is limited space available. Please book ASAP and pay early to be assured a spot.

Mpala Ranch in Laikipia, November 16-18

Mpala Ranch is a 50,000 swath of savanna and woodland habitat in Laikipia. It is unfenced, but defined by the catchment of 2 rivers. It has some of the most spectacular wildlife populations outside the gazetted national parks - over 6,000 elephants, Grevy's zebra, a large population of wild dogs, eland, and hippo among others.

Mpala Ranch is a biodiversity haven. In 1994 the existing ranch was converted into a Research Centre. It is funded and administered by a Trust in collaboration with Princeton University, the Smithsonian Institute, the National Museum, and Kenya Wildlife Service. It deals with conservation and management of wildlife and natural resources in unprotected areas and demonstrates that protecting wildlife does not require the exclusion of humans and the activities of their livelihoods. It hosts visiting research scientists from all over the world.

During our visit, we'll have a chance to visit the historic caves on the property, do game drives, and hear presentations from resident researchers. The exact topics for the itinerary will be confirmed as we approach the travel date.

Accommodation: We will stay in the main ranch buildings. The rooms are ensuite.

Cost: 18,000 Kshs pp sharing **Included:** FB and lodging

Not included: Transport. Please indicate transportation status when signing up: if you will be driving, if can take passengers, or if you need transportation. Van transportation can be arranged if needed.

Other: indicate if you are a vegetarian or have food allergies when signing up.

This opportunity to visit Mpala Ranch is a special privilege extended to the Kenya Museum Society

Future weekend and overnight trips: watch for details on -

6 - 7 October, Naivasha Staying at the home of documentary makers Joan and Alan Root, visit to raptor sanctuary, Hell's Gate National Park and boat ride on Lake Naivasha.

27 - 1 December, Samburu & Shaba Game Reserves Visit Chandler's Falls, Magado Crater and Ol Lolokwe Mountain. May include a half-day hike.

Day trips or half day outings

**Ol Donyo Sabuk National Park
Saturday 25 August 2018
8 am to 4 pm**

Hiking and birding day trip

Get away from noisy Nairobi for a couple of hours, hiking, birding and game viewing in this serene national park.

The name Ol Donyo Sabuk , in Maasai , means “ solitary mountain”, this unique mountain—a rugged hump-backed outcrop of ancient rock—stands a proud 7,037 feet tall in the predominately flat surroundings of the Athi plains. It offers from its summit magnificent 360 degree panoramic views over the Athi River, pineapple fields of Thika and snowcapped views of both Mount Kilimanjaro and Mount Kenya on clear days.

Ol Donyo Sabuk also homes the grave* of the famous Sir William Northrup Mcmillan (originator of the McMillan Memorial Library in Nairobi, opened after his death).†

* On the grave see <https://www.findagrave.com/memorial/121240751/william-northrup-mcmillan>

† For something on his life see <https://www.britishempire.co.uk/library/northrup.htm>

The park is only 65 km from Nairobi towards central highlands of Thika, and makes for an excellent day trip. The lush vegetation and cool air of this compact and scenic national park, make trekking easy. The leisurely trek will provide ample opportunity to bird view up close, and also admire various wild grassland game. We will be accompanied by a game ranger as the park boasts of large numbers of buffalo.

Our plan would be to drive northwards to Thika town, via the Chania Falls, before proceeding to the Fourteen Falls, through pineapple plantations. Making stops at all these lovely sites as we drive into the park for a full on day trekking and birding adventure.

Our own Washington Wachira will lead the trip, sharing with us his vast and comprehensive knowledge on birds.

Cost:

KMS Member - Ksh 3,050 Guest - Ksh 3,350

Included - Transport, guide and rangers fees

Excluded - Park Fees, Lunch and other personal expenses.

Park Fees:

Citizen Adult	Ksh 300	Citizen Child	Ksh 215
Resident Adult	Ksh 600*	Resident Child	Ksh 300
Non – Resident Adult	\$26	Non – Resident child	\$17

Payment: Safaricom, M-PESA, Paybill, Business No 400800, Account number 6571570019.

Meeting Point: KMS Office, in Nairobi National Museum

Bring a hat, drinking water, binoculars and wear good walking shoes.

Note: Please carry your KMS membership card; you can renew it at the KMS office

Suitable for children over 9 years.

We look forward to this exciting day out and hope many of you will join us.

* Corrected from last Tracker: apologies - ed.

Saturday 15 September 2018
Behind the scenes visit to
Palaeontology & Archaeology Sections of the
National Museums of Kenya
10 am – 12 am

Palaeontology Section is under the Earth Sciences department, one of the core research departments of the National Museums of Kenya. Kenya's human fossil record dates back to the last 6 million years, making Kenya indisputably the oldest record holder and truly the Cradle of Mankind. We will get a rare opportunity to view replicas of Lucy, *Zinjanthropus* and *Australopithecus*, fossils of extinct carnivores, insects and plants, among other fossils and we get an opportunity to learn some of the significant similarities and differences between chimps and humans.

- ***Archaeology Section.*** The archaeological collections at NMK were, obtained through professional excavation and the donations of enthusiasts since the 1920s. They consist of stone and bone artefacts, shell, pottery, faunal material as well as rock art reproductions. These collections cover all the important periods of human technological local and social development, from 3.6 million to 300 years ago. Collections from the Early Stone Age include the oldest artefacts in the world and reproduction of the oldest human footprints left more than 1.5 million years ago from the Turkana Basin. We will have a demonstration on how our ancestors made and used the stone tools. Some of the major breakthroughs in Archaeology in the last 5 years; Discovery of unique fossil hand bones and of earliest site with modified faunal remains in isolation from stone tools in the Koobi Fora region; discovery of Rock Artistes in various parts of the country including Mt. Elgon area, Mbeere and Nakuru areas and discovery of Iron Age sites in Mt. Kenya region.

We shall visit these two departments, guided by palaeontologists and archaeologists for each section.

KMS Members – Adult Ksh 1,150, Child Ksh 550

Guests - Adult Ksh 1,350, Child Ksh 700

Proceeds made will go towards development of the Earth Sciences' various projects.

How to book for trips

To book for any KMS event, please contact us on;

0724 255 299 / 0780 755 231 / 020 2339158

info@kenyamuseumsociety.org

Proceeds from KMS events go to support the National Museums of Kenya

Get Involved with KMS Activities!

Dear Kenya Museum Society Members,

I am Herman Bigham the newly elected coordinator of Lectures and Events. I am soliciting your input and support to invigorate our activities in this area. I am an African from America with great enthusiasm and resources and want your ideas, suggestions and efforts to increase membership of students and local communities and their access to the resources and activities of the Museum and our Cultural Institutions.



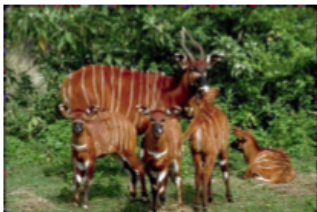
After my discussions and review of the past activities of the Lectures & Events committee I see great opportunity through reaching out and collaborating with other local instructions and organizations. Therefore, I have initiated meetings with the director of the African Studies Department of the University of Nairobi., the United States Embassy and others.

Please share your ideas through: info@kenyamuseumsociety.org



Kenya Museum Society and Muthaiga Country Club

Saving Mountain Bongo from Going Extinct
Flagship species of the High Forests



Did you know that the mountain bongo is Africa's largest forest antelope and found only in Kenya?

Iconic, shy and critically endangered, less than 100 bongos live in the mountains of Kenya. Their decline is thought to have started in the 1900s, but the population has plummeted in the past 50 years due to poaching, bush meat hunting, habitat encroachment and deforestation.

Donald Bunge

Wildlife and operations manager at Mount Kenya Wildlife Conservancy
Founding member of the National Bongo Conservation Taskforce

Drawing from 15 years' experience in captive wildlife management, with a focus on the conservation and breeding mountain bongo, Mr Bunge will enlighten us on the status of bongo and multiple efforts both local and global to re-establishing their population to genetically viable levels, and how we can get involved.

Saturday, 11 August 2018

Muthaiga Country Club

Bitings & bar 6.30 pm, Talk 7.00 pm

Cost: Ksh 3,300 Talk, Canapes & Dinner
Child (7-12 yrs) Ksh 2,600

Ksh 1,500 Talk & Canapes only
Child (7-12 yrs) Ksh 900

Note: an extra Ksh 500 is charged to members and guests without a booking

Bookings: 0724 255299, 2339158 or info@kenyamuseumsociety.org

Payment: Safaricom M-Pesa Paybill, Business no: 400800, Account no: 6571570019

➤**PLEASE NOTE:** For booking arrangements for talks at the Muthaiga Country Club, see box on page 9.

Talks at the Nairobi National Museum, Louis Leakey Auditorium
Refreshments on sale: 3.15 pm, Talk: 4.00 pm

Kenya Museum Society

Gorillas in the midst of war

Health studies on one of our closest relatives

By Prof John E Cooper and Dr Margaret E Cooper

Veterinary pathologist and animal lawyer



Did you know that Gorillas are amongst the closest relations of humans?

Although gorillas do not occur in the wild in Kenya, the National Museums of Kenya (NMK) has a substantial collection of gorilla material and Kenyans have contributed to studies on the two extant species.

In their presentation, the Coopers will share their two years' experience in working with the mountain gorillas in Central Africa, discuss the history of the discovery, and the role played by Dr Louis Leakey and others, in learning more about the biology of these usually gentle and elusive great apes.

Saturday, 18 August 2018

Nairobi National Museum, Louis Leakey Auditorium

Refreshments on sale 3.15 pm, Talk 4.00 pm

Cost: Ksh 400, KMS Member
Ksh 500, Guest
Ksh 200, Student

Bookings: 0724 255299, 2339158 or info@kenyamuseumsociety.org

Payment: M-PESA Paybill, business no. 400800, Account no. 6571570019

Saturday 1 September, 2018 at Louis Leakey Auditorium

**"From hippos to humans: The Turkana Basin fossil record"
Dr Fredrick Kyalo Manthi, EBS**

Senior Research Scientist & Head of Earth Sciences, NMK

Sedimentary rocks in the Turkana Basin in northern Kenya are well-known for their vertebrate fossil remains including numerous hominins. Deposited mainly between 4.2 and 0.2 million years ago, the sediments have contributed significantly to understanding hominin phylogeny and the environmental and ecological contexts of human evolution in Africa, the evolution of a wide range of non-human faunal species, as well as the first and last appearance of different faunal species. Work to unearth more material to help fill gaps in particularly the human evolutionary tree continues to date.



This presentation will highlight some of significant fossil discoveries in the Turkana Basin, and how they have helped understand the evolutionary history of different faunal species.

Refreshments on sale: 3.15 pm, Talk: 4.00 pm

Cost: Ksh 400, KMS member and Ksh 500, Guest

Bookings: 0724 255299, 2339158 or info@kenyamuseumsociety.org

Saturday, 29 September 2018
Muthaiga Country Club, 7pm

“Communities and Wildlife Ecosystems: Conundrum or Opportunity”
By Colin Church OBE

Colin Church has had many years of involvement in conservation in East Africa. As Chairman of Rhino Ark Management Committee for 12 years – 2000-2012, he oversaw the completion of the 400 km electrified fence (and the funds it required) that now surrounds the 2000 km² Aberdare Conservation Area (ACA) and the startup of the fencing of Mt Kenya in 2012. Both are vital water catchment areas for the country, encompassing indigenous forest, national park bordered by farming communities for **millions of people**.

The funding for the fencing and community outreach programme of Eburru – largely from Safaricom/Mpesa Foundations totalling UD\$1.5 million was finalized during his time with Rhino Ark. He is Chairman of the CBO Eburru Rafiki that is actively working on forest and community projects there.

He serves on various conservation boards including the Mara Elephant Project (MEP), Big Life Kenya in the Amboseli wider ecosystem and the marine charity – Ocean Soul Foundation. He was Chairman of the Kenya Wildlife Service board of honorary trustees in 2003/04.

Bitings & Bar 6:30pm, Talk 7:00 pm

Cost: Ksh 3,300 Canapes, Talk and Dinner, Children Ksh 2,600

Ksh 1,500 Canapes and Talk only, Children Ksh 900

Book and pay with KMS by Friday, 10th August at 12 noon

For bookings for talks at the Muthaiga Country Club

Booking via the KMS: 0724 255299, 2339158 or

info@kenyamuseumsociety.org M-PESA PayBill Business no: 400800, Account no: 6571570019

OR book on Saturday with Muthaiga Country Club by 11am

Tel: 0721 632 802/907; 0721 658 478; 0734 605 055/66/0722 200 785/ 020 260 3690/1; 020 232 6651/2.

PLEASE NOTE: There is a club surcharge of Ksh.500 for any walk-ins. Make sure you book in time!

Proceeds from KMS events go to support the National Museums of Kenya

THE AFFORDABLE ART SHOW: GETTING EVER CLOSER

(photos from last year's show)

Plans are well underway for the 2018 Affordable Art Show from 26-28 October at the Nairobi National Museum. Last year achieved 47% sales and we look forward to another successful exhibition.



Already we have received sponsorship received from Safaricom, CBA Bank, St Austin's Service Centre and Sarova Hotels but we are still require more funding.

CALLING ON ARTISTS

The Affordable Art Show is open to painting, sculpture, photography and mixed media work. We invite any artists among our members to consider participating in the show. Individuals can submit a maximum of two pieces created in 2018. For more details on the submission requirements, see item beginning on next page.

VOLUNTEERS

As the biggest annual event on the KMS calendar, a lot more personnel is required to pull it off successfully. KMS council is calling upon members to volunteer to help before and during the show.

We are looking for people with sponsorship suggestions and contacts, data entry skills and experience in art curating. We will also need extra hands to receive art on



17 October, 9:00am – 3:30pm, and to hang art between 24 – 26 October, in four-hour shifts.

The art show committee meets on every two weeks on Wednesday mornings at 10-12am, from August to mid-September, and then every week from late September onwards. If you have the time and ability to help, please contact the KMS office at telephone 0724 255299 or 020 2339158 and email info@kenyamuseumsociety.org.



Call for Artists!

THE KMS AFFORDABLE ART SHOW 2018



Dear Artist,

The Kenya Museum Society (KMS) is again holding the Affordable Art Show, which has had increased success each of the last 5 years. In 2017 40% of the pieces exhibited were sold. We remind you that the purpose of the show is to support the National Museums of Kenya (NMK). The event is also to showcase the diversity and richness of the creativity of Kenyan artists with a range of experience. We appreciate those artists who regularly support this show and welcome new participants.

The Affordable Art Show will take place in the Courtyard behind the Louis Leakey Auditorium, opening on Friday evening, 26 October 2018 at 6pm. There is a Ksh 500 entry fee to the Friday opening that must be paid by all, including artists. The show will continue on Saturday and Sunday, 27-28 October from 10am-4pm. No entry fee is charged on Saturday and Sunday.

The Affordable Art Show is open to painting, sculpture, photography and mixed media work. We invite you to submit a maximum of two pieces. Not all work accepted on the day of submission is guaranteed to be exhibited. All submissions will be scrutinized by an experienced panel for their artistic merit and to ensure they satisfy our other criteria. The other criteria are:

- 1) Each piece in any medium must be limited in size to a maximum of 100cm x 100cm to facilitate buyers carrying their purchases home by car.*
- 2) The work must be created in 2018.*
- 3) All paintings must be framed/stretched and ready for exhibiting, preferably with no glass. All fragile 3-dimensional pieces must be submitted in protective packaging. Please note: KMS will not be responsible for any damage to any pieces of work.*
- 4) Artists must price their work reasonably and affordably, at a maximum of Ksh 99,999.*

The panel will approve your prices. This is to increase the likelihood that your work will sell. KMS will retain 30% of the price for cash sales and 35% for credit card sales per piece sold.

Your work should be delivered to the Courtyard behind the Louis Leakey Auditorium on Wednesday, 17 October, strictly between 9:30am and 3:30pm. Artists from outside Nairobi who send work by public transport must make sure that the work arrives no later than Monday, 15 October with a label attached to each piece giving artist's name, title of piece, medium and price. Any shipped art that arrives late or has no label will not be included in the show.

Unsold art must be picked up on Monday, 29 October, strictly between 9:30am and 3:30pm because KMS has no place for storing art after that day. Any art not collected by that date and time will become the property of KMS and will be used to raise additional funds for NMK.

Please confirm your intention to participate as soon as possible to KMS's email, info@kenyamuseumsociety.org, giving your name, phone and email contacts and stating the type of work you will submit (painting, sculpture, photography or mixed media). Thank you.

We look forward to your participation this year in what has become the largest art show in East Africa. Please create something fantastic for us to showcase!

With best wishes,

Dr. Maria Stone, Art Show Coordinator, KMS

Lydia Gatundu Galavu, Art Curator, NMK

For more information: KMS 0724 255 299 or 020 233 9158,
info@kenyamuseumsociety.org

Past KMS Events

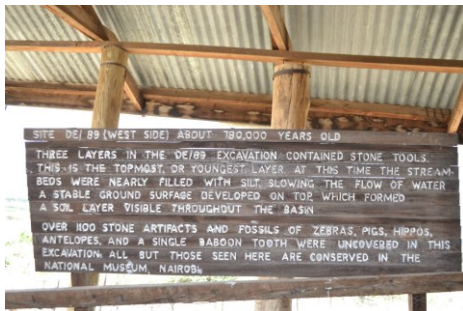
Accounts by wasafiri

Stepping back into pre-history at Olorgesailie by Kari Mutu (photos by author)

KMS members and friends visited the famous Olorgesailie pre-historic site on 23 June, 2018. This is one of the best places in the world to view early human technology. Located just a two-hour drive out of Nairobi in the Great Rift Valley, the sedimentary basin that forms the site contains artefacts from millions of years ago.

Our guide for the day was wildlife ecologist and nature photographer, Washington Wachira and he was a wealth of information. A few kilometres away from the site is Mt Olorgesailie, supposedly named after important Maasai elder who use to hold gatherings on the mountain. Mt Olorgesailie is an ideal place for a day hike but it's best to start very early in the morning because the area gets incredibly hot.

During our visit a museum attendant gave us rundown of the history and artefacts of Olorgesailie. Pictorials of stone tools and wall murals of different coloured sands explained the story of the region. By studying the area's geology, scientists have been able to create a calendar of Olorgesailie going back almost 1 million years ago.



Over the centuries, volcanic upheavals and sediment deposits have buried then exposed thousands of stone tools, hand axes and the bones of extinct pigs, elephants, baboons, hippos, antelopes and zebras.

As far back as 1919, researchers were digging for fossils in Olorgesailie. But it was palaeontologists Louis and Mary Leakey who brought recognition to the region. Starting in 1942 they found

evidence of prehistoric humans who lived during Acheulean or hand axe era which lasted from 1.5 million to 200,000 years ago.

Stone tool making began in Africa then spread to Europe and Asia. The Leakeys and their team of Kenyan researchers discovered collections of tools carved from locally available rocks. Sediment deposits helped preserve the stone tools and animal bones from the weather elements. At some point in ancient history there was a lake in the area, and a river flowed through the basin. So millions of years ago Olorgesailie looked very different from the semi-arid habitat of today. The presence of permanent water and rich vegetation would have attracted many types of wildlife.

Walking through the site we noticed many small conical hills which had clearly visible layers of sediment. There are about five excavated beds at the site containing an amazing array of stone tools crafted by our ancestors. Scientists think Olorgesailie may have been a home base for early humans which accounts for the large number of tools found here. We saw flat, leaf-shaped stones for skinning animals or cutting flesh, small flecks chipped off from larger rocks, and big round stones probably used for crushing bones to extract marrow.



Bird watching at Olorgesailie

Then we walked about half kilometre walk away to the site of the mammal fossils. Along the way the air rang with bird calls and fortunately for us, Washington is a bird expert. He helped us to identify many species such as Namaqua doves, emerald spotted wood doves, hornbills, brilliant red-and-yellow barbets, and grey-capped social weavers which create impressive nests.

Under a shack we saw the humerus bone from the skeleton of an elephant called *Elephas recki* that was excavated here. The elephant was dated to 992,000 years ago and *Elephas recki*, which is related to the present day Asian elephant, is now extinct in Africa. Next to the humerus bone was a much smaller sample from a modern elephant, showing the enormous size of the



prehistoric animals that lived here. In another shack we were shown pieces of bone from ancient hippos, testament to the vanished wetlands of this area.

A partial skull of the hominid *Homo erectus* was excavated in Ologesailie in 2003. *Homo erectus* lived more than 900,000 years ago and the stone tools are attributed to them. We were also shown ‘butchery sites’, spots filled with

small stone flakes and thought to be where early humans cut up the wildlife. It is not clear whether the hominids killed the animals or stumbled across the fresh remains.

Afterwards we walked in the quiet wilderness and down to a seasonal river. Everywhere the grass was knee high following good rains this year. By midday we were glad to seek shelter from the heat under a shaded *boma* and open on all sides. There was more bird-watching as we ate our packed lunches.

Ologesailie is an easy day outing and the museum is open daily from 8:00am – 6:00pm. But for longer visits there is a camping ground or you can book a self-catering banda for less than Ksh 2,000.

Lake Ol Bolossat & Menengai Crater, 14 – 15 July 2018 Nanette Nelson (photos by author)



The KMS safarians started out early morning to travel to the little known area between Gilgil, Nyahuru and Nakuru. Gearing up for birding and hippo viewing we began our journey. Onward through the traffic and weather, the first stop was Delamere Farm Shop for quick cup of coffee and bitings. Three other KMS Safarians joined the caravan.

As the journey continued to Lake Ol’Bolossat through the infamous town

of Gilgil, our guide “William” joined the group. Happy Valley set stories shared entertained the group as we travelled down the muddy and bumpy roads toward the lake.*

Arriving the lake, William shared that the lake is home to birds and was recently gazette as a Wetland Protected Area. As the Safarians walked the shore line, our guide pointed out and identified birds, although the Grey Crowned Crane seemed to be hiding from us. However, as the Safarians moved along the muddy roads, they happened upon a group of the elusive birds, and, happy, continued to the hippo’s pools near Nyahururu for a quick lunch



Lake Ol’ Bolossat bird watching



Grey crowned cranes enjoying their lunch

After lunch, the Safarians hiked along the edge of the hippo pond, to find only local sheep. It appeared that the hippos were well fed and asleep.

* The notoriety goes back mostly to the colonial period, and can be learned of in the film *White Mischief* and the book *The Life and Death of Lord Erroll*.



Sleeping Hippos lying low in the pools

The safari continued to the scenic Thompson's Falls, where some even took time to be photographed with geckos and costumed locals.

The adventure continued through Nakuru to Maili Saba Camp which is part of the Ujima Foundation. The foundation provides employability training to orphaned youngsters who are responsible for their younger siblings.



*Maili Saba Camp's
Reception and Dining
Room*

The camp's bandas offered amazing views of the magnificent Menengai Crater, of a dormant volcano. The conversations started earlier in the day continued through the evening, first around an indoor fire pit and then at dinner as all enjoyed a three-course gourmet meal.

Menengai Crater

In the morning, after a restful evening at the camp, the Safarians enjoyed a short hike into the crater.

This was followed a wonderful lunch before we headed back to Nairobi. Kwaheri KMS Safarians!



KMS Gift Shop

Open daily 9.00am to 5.30pm

Shop at the KMS Shop, and enjoy great discounts!

The shop is undergoing refurbishment! Repainting, a new “Kids section” some reorganization. When all is done in a few weeks there will be an opening (or-reopening) event.

But meanwhile the shop is open and operating as usual as the changes are carried out.



And the shop has some new merchandise, including:



Tissue holders

Clutch bags



Kiddie shoes

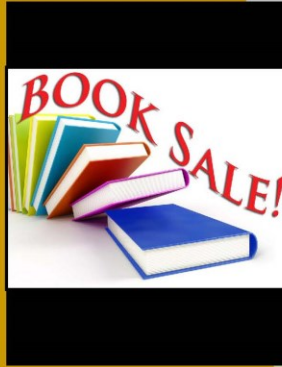


➤Remember: entry to the Shop is free, no need to pay Museum entrance fee. And, if you enter from the Museum side you may return to the Museum.



Kenya Museum Society

**Friday and Saturday
7 - 8 September 2018**



Big Sale with Great Bargains

- * Second hand books
- * DVD's , CDs and Tapes
- * Magazines
- * Games and puzzles
- * Paintings
- * Used computers and printers
- * A few household goods
- * And more!

**Nairobi National Museum
Main Courtyard**

**10.00 am — 4.00 pm
on both days**

Contacts:

Mobile - 0724 255 299
Wireless - 2339158

info@kenyamuseumsociety.org
www.kenyamuseumsociety.org



All proceeds support projects of the National Museums of Kenya

➤KMS welcomes your donation of books, DVDs, children's games, puzzles and magazines towards this year's sale. You can drop your donation at KMS office, open Mon-Fri from **9am - 5pm**. OR at the KMS shop located inside the Nairobi National Museum, open Mon to Sun from **9.30 am - 5 pm**. We can organise pick-up for larger items such as used computers/printers that you wish to donate for the sale.

A rare sighting of an intra-Africa Migrant bird near Nairobi!

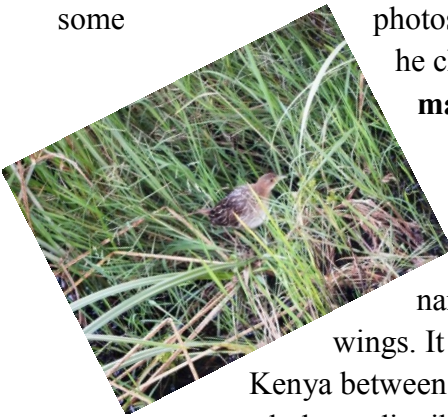
John Wanyoike, Tour guide and a birdwatcher

A couple of Sundays ago, while watching at seasonal wetland in Juja, I saw a flash of an unusual small bird which at first looked like a juvenile Black Crake to me. As I looked more critically, I realized that it was not something I have seen before. The bird quickly disappeared into the sedges, by the time I reached for my bird guide book. I checked on the different species of Crakes, and to my amazement the strange bird looked more like a Striped Crake. I called my friend Washington and explained to him and he suggested I play the species call once to see if it would respond and come out of its hiding. To our luck and surprise, it emerged from the sedges. I quickly took some photos and sent them to Washington via WhatsApp;



he checked and confirmed that indeed it was a **male Striped Crake**.

The Striped Crake is a rare, interesting, sporadic and beautiful species that lives in tall grasses and sedges, often near water. As the name suggests, it has stripes across the body and wings. It is an intra-Africa Migrant usually present in Kenya between May and November. These species has an extremely large distribution range and hence do not approach the thresholds for vulnerability, under the range size combined with a declining or fluctuating range size, habitat extent or population size and a small number of locations.



These species has an extremely large distribution range and hence do not approach the thresholds for vulnerability, under the range size combined with a declining or fluctuating range size, habitat extent or population size and a small number of locations.

Despite the fact that the population trend appears to be decreasing, the decline is not believed to be sufficiently rapid to approach the thresholds for vulnerable under the population trend. The population size may be small, but it is not believed to approach the thresholds for vulnerable under the population size and for these reasons the species are evaluated as least concern, according to International Union for Conservation of Nature (IUCN).



A Note on KMS membership

PLEASE NOTE: When using your KMS membership to gain entry to NMK Museums, Sites & Monuments, you must also provide other identification, your Identity Card, Passport or Driving Licence.

Those using business membership cards should provide their organization's job identification. KMS membership card is not transferable.

If you give your card to another individual, the Kenya Museum Society will revoke your membership card with immediate effect.

➤ Information about membership and an application form can be found at the end of the *Tracker*.

About or at the National Museums of Kenya



Events and Exhibitions

Opening of the Aquarium and Hall of Fishes

On July 20th the National Museums of Kenya held a launching ceremony for the refurbished aquarium (which had been closed in 2006 for want of resources) and the new Hall of Fishes.

In its Press Release, NMK commented that “with more than 350 known fishes occurring in lakes and rivers, and more than 1000 marine fishes of the Western Indian Ocean, most Kenyans can only name a few species”.

It continued” “This exhibition presents freshwater fishes of Kenya, and incorporates traditional fishing gear, and cultures associated with fishing practices of Kenyan communities. This exhibition is a collaboration of fish scientists with anthropologists and exhibition experts to bring to life, a world of fishes and related cultures.



The marine aquarium is a collaboration between the National Museums of Kenya and the Kenya Tropical Sea Life, displays a diversity of fishes occurring in the Indian Ocean. It includes soft corals and fishes occurring the coral reefs. It also includes sea urchins, sea anemones and starfish among

others.”

At the opening, the Director General of the NMK, Dr. Mzalendo Kibunjia explained the background to the projects. He insisted that things had changed at the museum. It

was no longer the same old same old. If the audience had come as schoolchildren they would not find familiar exhibits.

He also explained that the Museum was able to display only a very small proportion of its collections which amounted to 6.4 million specimens, including 3000 species of fish. Yet their space has not expanded, and some staff have to share space with specimens.

However the Museum would be spending US\$10 million on an 8 storey storage building.

The DG also paid a very gracious compliment to the KMS for its work—devoted to the central purpose of raising money for the museum.



“The live colour casts of fishes are displayed along a river mural to transport visitors to an underwater world showing occurrences of fish in different habitats” – NMK.

Types of traditional fish trap on display in the Hall of Fishes

A message from the Museum:

The Hall of Fishes has also an online link named Africa Fish Stories where the Ichthyology Section will include information on items displayed but also others that the hall may not accommodate. This is through an initiative with the Africa Oxford Initiative. The URL for this is <http://oxfordstories.ox.ac.uk>.



Museum *Art*

AUGUST EXHIBITIONS

Creativity Gallery

Nairobi National Museum

Korea Fantasy

Jaemoon Yang

B.T.Kim & Chunho Won

Open 11 – 31 August, 2018



Korea Fantasy

JAEMOON YANG
B.T. KIM
CHUNHO WON

August 11 – August 31, 2018
NAIROBI NATIONAL MUSEUM
Creativity Gallery



Afro – Cubism ACJ #1

Sculpture in Silicate rock by Robin O.

Mbera

The Mutuma Maranga Collection

Open to public, 11 August, 2018

World Heritage Site News

Until this year, the following Kenyan sites were recognised by UNESCO as World Heritage Sites:

Cultural sites	Natural sites
Fort Jesus, Mombasa (2011)	Kenya Lake System in the Great Rift Valley (2011)
Lamu Old Town (2001)	Lake Turkana National Parks (1997,2001)
Sacred Mijikenda Kaya Forests (2008)	Mount Kenya National Park/Natural Forest (1997,2013)

First the good news

This year a new Kenyan site has been added to the list of World Heritage sites. This is Thimlich Ohinga (see photo on cover of this *Tracker*). The following description is condensed from the UNESCO website:*

Located 46 km northwest of Migori Town in the Lake Victoria region, Thimlich



Ohinga archaeological site is a dry-stone walled settlement, based on a complex organization system of communal occupation, craft industries and livestock that reflects a cultural tradition developed by pastoral communities in the Nyanza region of the Lake Victoria basin that persisted from 16th to mid-20th centuries.

Thimlich Ohinga is the largest and best preserved of these massive dry-stone walled enclosures. The Ohinga appear to have served primarily as security for communities and livestock, but they also defined social units and relationships linked to lineage based systems.

Thimlich Ohinga is an exceptional testimony of settlement patterns and spatial community relations in the Lake Victoria Basin, which documents the successive occupation by different people from various linguistic origins during an important episode in the migration and settlement of the Lake Victoria Basin

* <https://whc.unesco.org/en/list/1450>

between the 16th and 17th centuries. It also gives reference to habitation patterns, livestock cultivation and craft practices prevalent in communal settlements at this time.

Maintenance work of the structures was carried out over the centuries using traditional materials and techniques. Several subsequent periods of occupation and repair did not interfere with the design or workmanship of the structures. After their abandonment, the Ohingni became ruins. In the past decades, these ruins have now been largely restored, and selected walls have been added to demarcate the boundary between the archaeological site and the forest.

The property is protected by the National Museums and Heritage Act, Cap 216 of 2006 and is managed by the National Museums of Kenya. The legal protection is further strengthened by traditional rules and taboos maintained by community elders, which assist in the protection of the property and its surrounding flora and fauna.

The property serves as a meeting venue for the community and remains a location for community rituals, in particular in times of crisis. These as well as the community-based maintenance strategies need to be continued to retain the strong involvement and attachment of the local communities.

Now the not-so-good news

In June this year UNESCO placed Lake Turkana on the list of endangered World Heritage Sites. It said, “The Committee expressed concern about the changes affecting the hydrology of the Lake Turkana Basin, notably the disruptive effect of Ethiopia’s Gibe III dam on the flow and ecosystem of Lake Turkana and the Kuraz Sugar Development Project, which poses further threat to the site. The Committee also evoked the potential impacts of the Lamu Port-South Sudan-Ethiopia Transport (LAPSETT) Corridor Project.

“The most saline of Africa’s large lakes, Turkana is an outstanding laboratory for the study of plant and animal communities. The three National Parks serve as a stopover for migrant waterfowl and provide major breeding grounds for the Nile crocodile, hippopotamus and a variety of venomous snakes. The Koobi Fora deposits, rich in mammalian, molluscan and other fossil remains, have

contributed more to understanding paleo-environments than any other site on the continent.”



Lamu seafront. Photo Norbert Allan - from the *Star*

UNESCO is also concerned about the future of Lamu town. Although it may be alarmist to suggest it is on the verge of being struck off the World Heritage Site list (see *The Star* July 5th 2018), it is true that it is being negatively affected including by increasing number of boda-boda motorcycle taxis (see “Charm of Lamu Old Town eroded by mini-skirts, bikes” by Cheti Praxides *Star* July 30th).

Lamu County Tourism Executive Dismas Mwasambu is reported as saying that the town’s status as a heritage site is under threat. However, he also said that a team of experts has so far been formed, with county officials and representatives from the Lapsset board and the NMK. “They have been mandated with formulating clear and stringent regulations that will protect Lamu’s heritage from all external influence.”

UNESCO has asked Kenya to revise the buffer zone around the town, carry out studies to ascertain the likely effects of pollution from the planned coal-fired power plant* on the coral stone buildings of the Old Town, and take various other measures and to report by February 1st next year on the state of conservation of and the implementation of the UNESCO recommendations.†

* This is being challenged before the National Environmental Tribunal.

† <https://whc.unesco.org/en/soc/3748>.

Kenya Museum Society's Mission, Benefits & Annual Rates

Kenya Museum Society is a non-profit members' organization founded in 1970. Our mission is to support and promote the National Museums of Kenya, the custodian of Kenya's natural and cultural heritage that manages six World Heritage Sites, twenty-two museums and over a hundred sites and monuments across the country.

Membership

By supporting KMS with your membership, you are helping to preserve and promote Kenyan history, culture and artifacts. At the same time you'll have fun learning about Kenya in the company of people who enjoy the same interests as you.

Become a KMS member and enjoy;

- Free entry to all National and regional Museums, prehistoric sites and monuments in Kenya
- Bird walks with Nature Kenya (Ksh 200 admin fee, payable to Nature Kenya), reduced rates on tree walks with FoNA, day and weekend outings, evening lectures, films and other programs for members
- Entry to the Ololua Nature Trail, at half price
- Monthly newsletter *Tracker* to keep you abreast of KMS and Museum activities
- Email updates on KMS and Museum activities
- Annual magazine *Kenya Past and Present*
- 5% discount on books in the KMS Shop at Nairobi National Museum
- Free borrowing privileges at KMS library (excluding students and visitors)
- Free reading privileges at the National Museums of Kenya library
- Reduced advertising rates in the *Tracker* & *Kenya Past and Present*

Single resident	KSH 1,750	One membership card
Family resident	Ksh 2,500	Including children below 18 Yrs
Students (Kenyan Resident)	Ksh 300	One membership card
Up Country (New Category)	Ksh 1,200	One membership card
Non Resident	USD 50	One card
Visitors (valid for one month only)	Ksh 800	One membership card
Business Membership (Kenya)	Ksh 6,000	Eight membership cards

KMS Membership Registration Form

Please use BLOCK letters

Mr/Mrs/Ms/Dr/Prof (please circle)

Family Name _____

First Name _____ Spouse _____

Names of Children (under 18): _____

P.O. Box _____ Code: _____

Tel: Home _____ Office: _____

Mobile: _____

Email: _____

NEW MEMBER/RENEWING MEMBER (please circle)

Please send *Tracker* by EMAIL/POST (please circle)

(Below for Office Use Only)

<p><i>Receipt No:</i> _____ <i>Date</i> _____</p> <p><i>Membership Nos:</i> _____</p> <p><i>Amount Paid</i> _____ <i>Cash/Mpesa/Visa/Cheque</i> _____</p> <p><i>Cheque No:</i> _____ <i>Bank:</i> _____</p> <p><i>Processed by</i> _____ <i>Added to Database by</i> _____</p>
--