

KENYA MUSEUM SOCIETY



TRACKER

OCTOBER 2017



Participants in a previous KMS visit to the Nairobi
Railway Museum; Photo by Ebrahim Mwangi of NMK's
AV Dept

Kenya Museum Society
P.O. Box 40658 - 00100 Nairobi, Kenya
Info@kenyamuseumsociety.org
www.kenyamuseumsociety.org
Tel: 2339158 (Direct)
Tel: 8164134/5/6 ext 2311
Cell: 0724255299



DRY ASSOCIATES LTD

Investment Group



INVEST IN YOUR FUTURE...
INVEST WITH
DRY ASSOCIATES LTD

WWW.DRYASSOCIATES.COM - INVEST@DRYASSOCIATES.COM - 0705 799 971 - 0738 253 811

Contents

Kenya Museum Society News

Forthcoming trips and activities	2
Masai Mara in November.....	2
Christmas safari.....	3
Day Outing Heritage Walking Tour	5
Exploring the Universe @ Nairobi National Museum	6
The Affordable Art Show.....	7
General Information.....	7
I Art appreciation for kids.....	9
II Art appreciation for the 18-30 year olds.....	9
Call for Volunteers.....	10
Past KMS events	11
Account by an Msafiri: A Weekend at Kembu Farms by Fred Kilby	11
Thank you for the support on the Second Hand Sale Event.....	13
@ The Museum Shop	14
KMS: Membership benefits and application form	21-22

The Museums of Kenya

Initiate your journey into loving birds through birdwatching at Nairobi National Museum by Dominic Chesire.....	16
New Exhibition: Coming soon: Whispering Bones: Our Hidden Treasures	18
Nigerian Festival in Nairobi: October – November 2017 (NMK and African Heritage House)	19



Supreme Court postpones 2017 KMS Affordable Art Show

Well.....not precisely! But the Supreme Court decided that the August 8th Presidential elections is void. The Independent Election and Boundaries Commission has fixed the rerun for

October 26th. KMS has therefore moved the Art Show to November 3rd-5th. See later pages in this *Tracker*



THE AFFORDABLE Art Show 2017

Opening Party

FRI, 3 NOV
6PM TO 9PM

ENTRY FEE 500/-

INCLUDES ONE COMPLIMENTARY DRINK,
BITINGS AND ENTERTAINMENT

Full Show

FRI-SAT, 4 - 5 NOV
10AM TO 4PM

ALL ART ON DISPLAY

FREE ENTRY

Art donated by
Geraldine Roberts

ALL ART PRICED
BELOW KSH 100,000

VENUE

COURTYARD, FORMER ADMINISTRATION BUILDING
NAIROBI NATIONAL MUSEUM

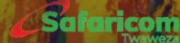
ALL PROCEEDS SUPPORT THE NATIONAL MUSEUMS OF KENYA

☎ 0724 255299

☎ 020 2339158

✉ info@kenyamuseumssociety.org

DESIGN SPONSORED BY TATU CREATIVES LTD



Kenya Museum Society Trips and events

Safaris

MASAI MARA: 17-19 November, 2017

We have an excellent deal to visit the Masai Mara in the low season. We shall stay at Keekorok Lodge – one of the oldest and still one of the most beautiful lodges in the Mara. The rooms are comfortable, each has a veranda and there is a swimming pool. The main bar and lounge area has an old-world ambience. Beyond the extensive lawns there is a walkway over a wetland leading to a bar strategically placed next to a pool full of hippo. There are several sitting areas along the walkway where you can enjoy sundowners under the stars.

The Mara is renowned for its concentration of game. It is a more attractive and peaceful place in November when the 4WD beasts have left. We shall see all the Big 5 as well lots of plains game. We may even see some wildebeest.

Programme

Friday- Depart Nairobi at 7am. Lunch at Keekorok. After a cup of tea we depart for a game drive. Sundowners at the Hippo pool bar. Dinner.

Saturday- After breakfast spend the whole day in the park, visiting the furthest corners. Picnic lunch. Dinner at lodge.

Sunday- After a leisurely breakfast depart for Nairobi. We can have a light lunch in Narok.

Cost- 20,700ksh pp sharing.

Included- FB for two days

Not included- Park entry, transport

Alternative - Those who do not wish to drive can fly in. The air strip is practically next to the lodge, but then you will hire a vehicle from the lodge for game drives.

KMS booking policy- All trips must be fully paid for 3 weeks prior to departure. November: Marsabit. No bookings or payment for this trip will be accepted after 25 October.

Call 0724 255 299 or email info@kenyamuseumsociety.org

2 *Tracker* October 2017

CHRISTMAS SAFARI: December 26-January 1, 2018

The 7-day Christmas safari will take us to Tsavo East, Tsavo West, Lakes Jipe and Chala and Grogan's castle. There will be a historical component as well. We shall take in the story of the Maneaters of Tsavo, the life of Ewart Grogan and the historic sites of Taveta.

26 December- Spend the night at **Maneaters Lodge**. It is lovely camp with spacious tents and a swimming pool hewn out of rock. There will be a walk to Tsavo Bridge, Tsavo station with its antiquated railway machinery and a view of the standard gauge railway. In the afternoon you can swim and follow with a talk on Colonel Patterson and the man-eating lions. The lodge also has a small exhibition on the theme as well as the film "The Ghost and the Darkness".

27 December- The whole day is spent along the doum-lined palm banks of the Galana river where a lot of elephants bath and graze. We shall visit Mudanda Rock, Lugard Falls, Hippo and Crocodile Points. We may also cross the new bridge linking the two parts of Tsavo East. Overnight at **Galana Crocodile Camp**. It has lovely cottages strung along the banks of the Galana river.

28 December- spend the morning in the park and arrive at **Voi Wildlife Lodge** for lunch. The lodge has spacious grounds, 2 swimming pools and overlooks a fenced wetland and the plains beyond. The afternoon is free. You can swim, go for a birdwalk or just laze around.

29 December- Spend the day in the park. We can visit Kanderi swamp and Aruba dam. Overnight at Voi Wildlife lodge.

30 December- Depart early after breakfast and head to Tsavo West Lake Jipe. The lake has a flat shoreline, surrounded by reeds and a lot of water birds. There are usually a lot of elephants wandering through the village that has sprouted just outside the park! After a picnic lunch we visit Grogan's castle for refreshments. If there is time we shall visit the historic sites of Taveta. Evening we finally arrive at **Ziwani Tented Camp**.

Ziwani has a superb setting. Built around a wetland, it has spacious grounds with the looming mass of Kilimanjaro in the background, dominated by Mawenzi peak. The tents are spacious and the dining area is beside the dam. In the evening there is a large campfire. The lodge also offers night drives.

31 December- After breakfast we can take a guided walk along the wetland and river to see crocodiles and birds. After lunch we drive around the farm that once belonged to the colonial giant Ewart Grogan. We then visit Lake Chala on the Kenya/Tanzania border. It is a picturesque crater lake, said to be one of the deepest lakes in the world. Dinner by the campfire.

There will be a talk on the life of Ewart Grogan sometime during this busy week!

January 1- Depart for Nairobi after breakfast. We shall take the Taveta-Loitokitok-Emali road which has very little traffic. If it is a clear day there will be uninterrupted views of Kilimanjaro for 100km.

Cost: 59,200ksh pp sharing

Included Full board on safari

Not included Park entry, transport and guided walk in Ziwani

Those who have their own transport can sign up for part of the safari. ➤ Christmas season bookings are difficult to hold. There is the added uncertainty of the post-election period. The sooner you book with a deposit the better.

Call 0724 255 299 or email info@kenyamuseumsociety.org

Day Outing

HERITAGE WALKING TOUR Sunday 8 October 2017, from 10.00am

#Re-livingHistory

This will be an excellent tour, which will see us explore the city's heritage. We will have a guided walk from the Nairobi National Museum, through Nairobi's city streets and learn about the history of the architecture of Nairobi's most prominent buildings, whose history span from the British occupation to the modern era.

Included:

- Guided walking tour to most of the gazetted city buildings by Martin Wahogo, author of Know Kenya pocket guide book
- Guide fees

Cost

KMS member: Ksh 900

child: Ksh 500

Guest adult: Ksh 1,200

child: Ksh 600

Wear comfortable walking shoes and bring your identification card / papers, a hat, sunscreen, enough drinking water, picnic lunch (optional) and a small camera.

Important Note: Please don't wear expensive jewellery to town, during the tour.

Optional: After the tour, participants may tour The Nairobi Gallery that is currently showcasing the Murumbi African Heritage Collection Exhibition. **(KMS members can use their membership cards to enter the Gallery at no fee)**

Relevant recommended books retailing at the KMS Shop:

Know Kenya by Martin Wahogo @ Ksh 700

A brief tour of the buildings of Nairobi by Evelyn Wanjiku @ Ksh 1500

Call 0724 255 299 or email info@kenyamuseumsociety.org

Evening Event

EXPLORING THE UNIVERSE @ Nairobi National Museum

Saturday 25 November 2017 6 pm-10 pm

Join Kenya Museum Society and The Travelling Telescope at Nairobi National Museum as we explore the night sky. We shall have a mobile planetarium, remote navigator and one of the largest telescopes in Kenya.

The focus for the 25th November will be the Moon. It will be at 'first quarter', meaning it will be almost overhead at sunset and will set at midnight. During this phase of the Moon we'll be able to see incredible details on the surface, including craters, mountains and some of NASA's Apollo mission landing sites.

We [The Travelling Telescope] shall also use a powerful laser pointers to highlight different constellations, bright stars and other objects of interest in the sky. We call what we do 'edutainment', where we share our passion for observing the Cosmos in a fun yet informative way



The event is open for kids aged 3 years and above as well as adults.



Book your spot today Cost: KMS Members – Ksh 1,850 Guests - Ksh 2,050

Payment Options: Safaricom: Mpesa paybill, Business No: 400800, Account: 6571570019. Airtel Money: 0780 755 231 Call 0724 255 299 or email

info@kenyamuseumsociety.org

THE AFFORDABLE ART SHOW 2017: Change of Date to 3-5 Nov by Marla Stone, Art Show Coordinator*

KMS has joined the ranks of many individuals and companies who are making adjustments to plans due to the shifting dates for the Kenyan election. We have **moved the dates of The Affordable Art Show to Friday-Sunday, 3-5 November.** Please change your calendars and relay the message to anyone you may have told about the show.

As a reminder, the show will be held at the Courtyard behind the Louis Leakey Auditorium in the compound of the Nairobi National Museum. The **Opening Party will be Friday, 3 November, from 6:00-9:00pm.** There is an entry fee of Ksh 500. Included in the entry fee is one free drink, bitings, and entertainment by the Peponi Ensemble. The full show then continues **Saturday and Sunday, 4-5 Nov, from 10:00am to 4:00 pm.**



* Photos from past Art Shows by Ebrahim Mwangi of NMK's AV Dept

The Art Show Committee is asking KMS members to support the Art Show in four ways:

1. Please **help us advertise the Art Show**. Invite your family, friends and colleagues to attend the show. You should soon receive Facebook and Twitter announcements and emails that you can easily forward to others. Posters and e-posters are available for you to display in your business or forward electronically. You are our best advertising avenue.
2. Please **make sure you come to the show**.
3. Please **consider making a sponsorship donation** toward the expenses of the show. We have received sponsorships that total Ksh 540,000 from Safaricom Ltd., St. Austin's Service Centre Ltd. and Commercial Bank of Africa (CBA). However our expense budget is approximately Ksh 610,000; hence we are Ksh 70,000 short. In the past KMS members have helped in this way. You can contact the KMS Office on 0724 255 299 or info@kenyamuseumsociety.org to make a payment, of which we will give credit in the Art Show Catalog (or keep it anonymous if you prefer).
4. **Volunteer to help with various activities to put up the show**. Volunteers will receive a complimentary ticket to the Opening Party. The dates when help is needed are 25 and 28 Oct and 1-5 Nov. Specific tasks are detailed at the end of this article.



The **KMS Affordable Art Show** has become the principal fundraising activity of the society. The four previous Affordable Art Shows netted a total of Ksh 3.7 million, all of which has been used for infrastructure and

exhibition projects for the National Museums of Kenya (NMK). We are aiming for Ksh 1.4 million proceeds this year.

The show, which features art by 180-200 artists, has achieved the status of being the largest juried art show in East Africa. This is because approximately 310-315 pieces of art are selected for exhibition from among 450-500 pieces of art submitted. The artists range from established and well-known artists to emerging artists to brand new artists submitting work for the first time. The variety of artists, media, styles, sizes and subjects offers the perfect place to find any kind of art by any kind of artist. Besides paintings and sculptures, this year the show will include a section of artistic photography. This is the perfect venue for businesses looking for art for their offices and branches.

TWO ASSOCIATED ACTIVITIES FOR THE YOUNGER PEOPLE

There are two special activities during the show. One is Saturday 4 Nov from 10:00 to 12:30. This is an **activity for children** aged 6 to 12 years that will include a tour of the show with the intent of emphasizing the variety of art on display. Children will then be provided materials and instruction for creating their own piece of art. The charge for the event is Ksh 800 per member's child and Ksh 1000 per child for non-member's children. Pre-registration is highly encouraged as this is a popular event that will fill up quickly.

Saturday afternoon at 2:00pm we are offering an **informational meet up for young potential patrons aged 16-30 years**. The event will be led by a young and experienced artist who will guide participants to identify art characteristics that help them appreciate art. The event is free, but does require pre-registration. Contact KMS at **0724 255 299** or **info@kenyamuseumsociety.org**

There's something for everyone at the 2017 Affordable Art Show. Please come, bring your family and friends, and invite many others to attend. Remember, you are our best advertising. Thank you for supporting this very important KMS event.

VOLUNTEERS NEEDED

Volunteers will receive a complimentary ticket to the Opening Party. Snacks and drinks will be provided for volunteers on the preparation days. Bring a sandwich if you wish and dress comfortably.

Volunteers are needed on several days of preparation:

Wed, 25 Oct 9:15-4:30 enter data for the catalogue, help direct artists as they submit their art

Sat, 28 Oct 9:30- 2:30 proof the art data and prepare the layout of the catalogue

Wed-Fri, 1-3 Nov 9:15-4:00 help hang the 300 pieces of art, put labels on art

Fri, 3 Nov 3:00-6:00 help decorate the courtyard and set up the bars, entry table and raffle centres, put up signage

Fri 3 Nov 5:30-9:30 sell or collect entry tickets, tend the bars, take tickets, assist patrons to pay

Sat-Sun, 4-5 Nov 10:00-1:00 or 12:45-4:00 assist patrons who are buying art, on Sun carry art to cars

Call 0724 255 299 or email info@kenyamuseumsociety.org



A PAST KMS EVENT

An Account by an Msafiri

A Weekend at Kemu Farms

By Fred Kilby

Photos by Tish Newmyer



The group departed Nairobi on Saturday morning for a thrilling drive to Nakuru, in the company of a large numbers of Kami Kaze trainees. Following a successful rendezvous, our leader, Tish Newmyer, put her advanced orienteering skills to good use, enabling us to pioneer an unorthodox approach to the Menengai crater. The view of the crater was spectacular, and we were also able to see the good progress made on new transmission sites and the drill rigs for the geothermal project, which added so much to the natural beauty of the area.

The group then decamped to Kemu cottages, where we were hosted by Andrew Nightingale. After lunch and an interesting bird walk and tour of the dairy farm, we were treated to a highly entertaining presentation by Andrew. He told us of his lifelong interest in the freshwater fish of East Africa. He also shared with us a remarkable set of over 500 illustrations of local freshwater fish he had commissioned from a local artist, and the inspiring progress he has made on a

field guide to these fish that he is preparing in collaboration with two prominent academics. We are all looking forward to seeing this important work published.

The following morning, after a lavish breakfast hosted by Andrew and his wife Zoe, we were treated to a tour of Beryl Markham's early home, which has been dismantled, transported from a neighbouring farm and reassembled at Kemu for use as a guest cottage. We then visited Kenana Knitters which is located on the farm. This project was founded and is managed by Andrew's mother, and provides income generating opportunities for local women spinning wool and making woollen handicraft items, mostly for export, but you can find some at the Museum Gift Shop. From modest beginnings, it has mushroomed into a program that employs over 300 local women and provides health services for their immediate families.



Although it proved somewhat difficult to extract our group from the Kenana Knitters gift shop, we were eventually able to proceed to Lord Egerton's Castle, which has now passed into the ownership of Egerton University. We were ably guided through the Castle by an Egerton guide and told the history of its construction and the efforts being made to restore the property.

THANK YOU!

We would like to thank you for your generous contributions of books and other things for the KMS annual Second Hand Sale event.

It was indeed a great success. The few remaining books will be donated to two schools in the rural areas, with an aim of helping creating school and community libraries.

All funds raised from the sales will be used to fund various projects of the National Museums of Kenya.

We really appreciate your continued support

New Issue (44) of Kenya Past & Present is out and available for collection from the KMS Office/Shop.

Please note: *Family, Single and Business memberships are entitled to a free copy of the magazine.*

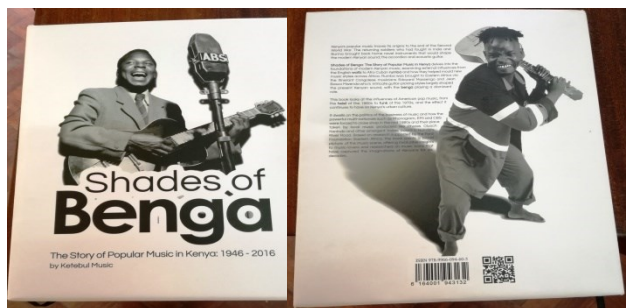


KMS Gift Shop

Open daily 9.00am to 5.30pm

Shades of Benga - The Story of Popular Music in Kenya: 1946-2016

By Ketebul Music



*"The curious beauty of African music is that it uplifts even as it tells a sad tale. You may be poor, you may have only a ramshackle house, you may have lost your job, but that song gives you hope."***Nelson Mandela**

Kenya's popular music traces its origins to the end of the Second World War. The returning soldiers who had fought in India and Burma brought back home novel instruments that would shape the modern Kenyan sound. Shades of Benga delves into the foundations of modern Kenyan music, examining external influences from the English waltz to Afro Cuban Rumba and how they helped mould new music styles across Africa. This book looks at the influences of American pop music, from the twist of the 1960s to funk of the 1970s and the effect it continues to have on Kenya's urban culture.

It paints a broad picture of the music scene, offering invaluable insights to music-lovers and researchers on music icons that have captured the imaginations of Kenyans for six decades.

Ksh 7,500, KMS members get 5% discount

Contact: KMS Shop 0713 354 926 to reserve your copy.

Also Available!

#ATasteOfAfrica

Olkerii Farm's homemade delicious jams, chutneys and honey (Marula, Fig, Cape Gooseberry, Strawberry...), 100% natural and made in Kenya, from organically grown fresh produce. They are also excellent additions to:

Salad dressings, Deserts, Sauces, Crepes and complement beef, lamb, pork and chicken!

@650 Ksh



Assorted natural soap by Nude Essentials.
Each Ksh 450

Beautifully crafted wood carvings, that are unique, easy to carry, are a great gift items or souvenirs and very affordable.



Payment: Mpesa Paybill, Business No. 400800, Account No. 657 157 0019

☞ Remember: entry to the Shop is free, no need to pay Museum entrance fee 😊.

And if you enter from the Museum side, you can return to the Museum. All profits go into the KMS to benefit the Museum.

The Museums of Kenya

Initiate your journey into loving birds through birdwatching at Nairobi National Museum

By **Dominic Chesire**, *Ornithologist and Research Scientist at Nairobi National Museum*

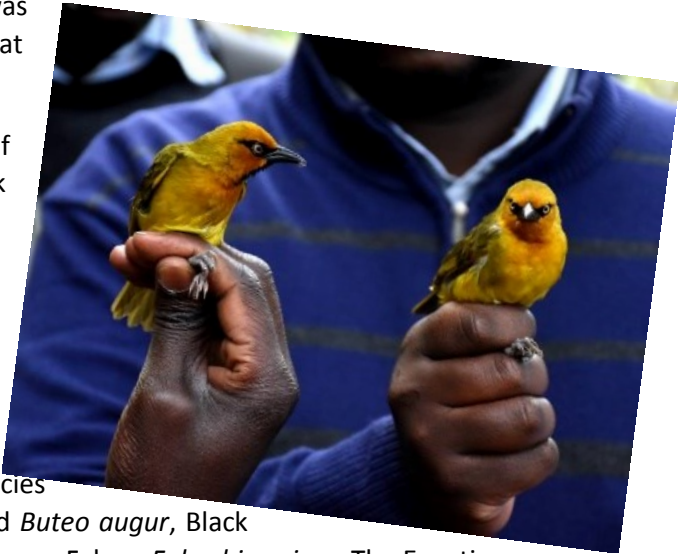
Nairobi National Museum is located 10 minutes' drive from the CBD. It is here that you can birdwatch —whether sitting or walking on a well-maintained nature trails. It is a place where you can start to nurture your birding skills considering that this houses the leading place for training and conducting researching on birds, namely the ornithology section of Zoology department, where you can seek clarification from experts if need be. The botanical garden has mostly indigenous trees, and it is well managed, ensuring that the ground is suitable for birds. Birds are very sensitive creature and researchers use them to monitor environmental changes to establish both the health of the environment and disturbances of habitats. An hour or more of birding will guarantee you between thirty and fifty species. If you include the adjacent Michuki memorial park, the total will increase significantly, because of improved habitat. The number of species recorded in a three hour or so birding session has been as high as seventy or more.



The Nairobi ringing group of the ornithology section have been doing bird ringing on weekly basis within the ground since 1992 and they still catch interesting species proving the area is perfect for the activity.

Birds initially known from coastal and drier part of the country have been observed in the garden: the Bearded Scrub Robin *Cercotrichas quadrivirgata* and the Slate-coloured Boubou *Laniarius funebris* while the rare Eurasian Wryneck *Jynx torquilla* migrant was also captured and ringed at the ground last year.

In addition, be sure of seeing Great Sparrowhawk *Accipiter melanoleucus*; this bird of prey has been breeding at the museum consistently for over seven years utilizing nests built more than ten years ago. The nests were used by other species



such as: the Augur Buzzard *Buteo augur*, Black Kite *Milvus migrans* and Lanner Falcon *Falco biarmicus*. The Egyptian Goose *Alophochen aegyptiaca* has had an interest in the nest, and has been observed at different periods having fierce fights with the owner, though there is no record of the goose breeding on the nest.

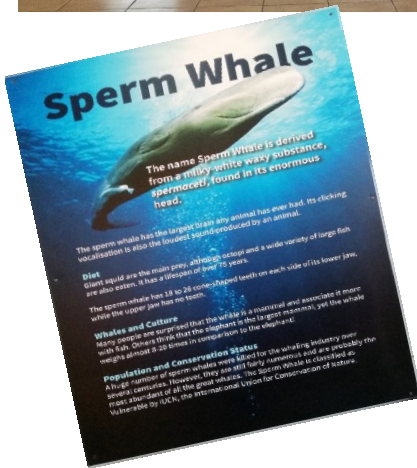
So find your own convenient time to pass by KMS, learn more and be directed on how to begin your journey into loving birds.

Whispering Bones: Our Hidden Treasures

Semi permanent exhibition

This exhibition is about skeletons of animals that have backbone, known scientifically as vertebrates. The Osteology section in the Zoology Dept has a diverse collection of skeletons.

Reptiles, Mammals, birds and fish are represented in the unique collection. This exhibitions includes the **whale**, the world's largest mammal which lives in oceans, the famous **Big Five** and some endangered and rare species.



Kenya Through The Lens Of The THAIS



This is the first time that these photos, the reflection of Kenyan beauty as captured through the lens of hthe Thais in their memorable journey, are displayed in Kenya!

This collection of photos is by renowned Thai photographers and editors, who tarvelled 7,000 kilometres during the 12 –day journey to Northern Kenya where the history of mankind presumably began and recorded their journey in this collection of beautiful photos and captions.

Central Bank of Kenya

Numismatic Gallery



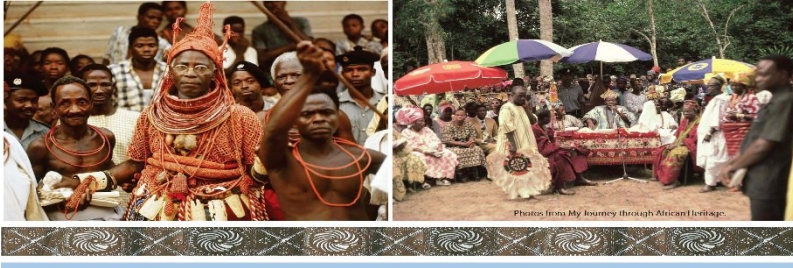
NATIONAL MUSEUMS OF KENYA and AFRICAN HERITAGE HOUSE (Alan Donovan)

PRESENT

NIGERIAN FESTIVAL IN NAIROBI

A rare and historic exhibition of Nigerian Contemporary Art and Culture

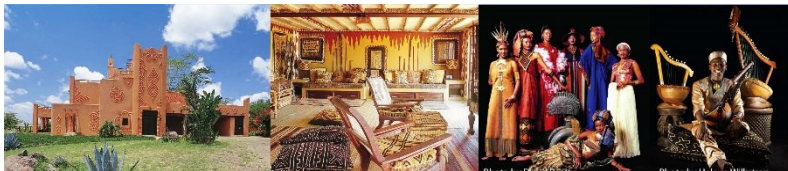
October - November 2017



ART AND CULTURE ON NIGERIA'S NATIONAL DAY: A city wide celebration of the contemporary arts and textile heritage of Africa's most populous country --- **NIGERIA** – during October and November 2017 with a sumptuous display of Africa's textile heritage from African Heritage House.

Alan Donovan arrived in Kenya in 1970. Before he co-founded the African Heritage Galleries in Nairobi with former Vice President of Kenya Joseph Murumbi, he traveled to all the states of Nigeria at that time and produced the first Nigerian Festival in Nairobi in 1972.

The Festival included artworks by several Nigerian artists and personal appearances by two young Nigerian artists, the phenomenal **Bruce Onobrakpeya** and **Jimoh Buraimoh** (whose works are featured in the Second Nigerian Festival in Nairobi). The First Nigerian Festival included a street festival and the first fashion show in Nairobi to include all African models, all African (Nigerian) textiles, and African Heritage Jewellery.



Alan is now celebrating his 50th Anniversary in Africa, having arrived at the US embassy in Ghana on July 4 1967, before he proceeded to Nigeria as relief officer for the US government. He quit his job and travelled across the Sahara and the Congo arriving in Kenya in 1970.

The Second Nigerian Festival in 2017 includes nearly 100 artworks by Nigerian artists on display at the National Museums of Kenya, the Nairobi Gallery and Alliance Francaise.



Other Exhibition dates to mark this festival

A Second Exhibition of **NIGERIAN CONTEMPORARY ART** in the **CREATIVE GALLERY** at the National Museums of Kenya Opening on Nigeria’s National Day October 1st, 2017, 2 to 6pm with artworks and textiles from a dozen of Nigeria’s leading contemporary artists.

Open from 9am-6pm every day until November 30th.

OCTOBER 9th – OCTOBER 29th:

**ALLIANCE FRANCAISE AND AFRICAN HERITAGE HOUSE
PRESENT**

THE VANISHING TEXTILES OF AFRICA

OPENING OF AFRICAN TEXTILE EXHIBITION FROM AFRICAN HERITAGE HOUSE, from October 9th to 29th, featuring a lecture, artworks and textiles from Nigeria’s famous female artist, Nike Seven Seven Okundaye. Nike has devoted her life to the preservation and protection of Nigeria’s splendid textile heritage, one of Africa’s greatest gifts to the world of art and culture.

26 OCTOBER: ALLIANCE FRANCAISE

*** THE RETURN OF A LEGEND: AFRICAN TEXTILE TOUR** by **KENYA'S AFRICAN HERITAGE**

FESTIVAL which travelled the world for over three decades with fashions created of the authentic hand woven and hand printed fabrics of Africa with authentic African costumes, models, dancers, musicians and others.

*** PAPILLON: THE LAUNCH OF THE NEW ALBUM "HEART OF AFRICA" BY THIS SPECTACULAR MUSICIAN** named **Papillon** who creates all of his own musical instruments with his mentor, the legendary **AYUB OGADA**, co –founder of the **AFRICAN HERITAGE BAND** with Alan Donovan.

*****READERS NOTES*****

KMS Membership Registration Form

Please use **BLOCK** letters

Mr/Mrs/Ms/Dr/Prof (please circle)

Family Name _____

First Name _____ Spouse _____

Names of Children (under 18): _____

P.O. Box _____ Code: _____

Tel: Home _____ Office: _____

Mobile: _____

Email: _____

NEW MEMBER/RENEWING MEMBER (please circle)

Receive Tracker by **EMAIL/POST** (please circle)

(Below for Office Use Only)

Receipt No: _____ *Date* _____

Membership Nos: _____

Amt. Paid _____ *Cash/Mpesa/Visa/Cheque* _____

Cheque No: _____ *Bank:* _____

Processed by _____ *Added to Database by* _____

Kenya Museum Society's Mission, Benefits & Annual Rates

Kenya Museum Society is a non-profit members' organization founded in 1970. Our mission is to support and promote the National Museums of Kenya, the custodian of Kenya's natural and cultural heritage that manages six World Heritage Sites, twenty-two museums and over a hundred sites and monuments across the country.

Membership: By supporting KMS with your membership, you are helping to preserve and promote Kenyan history, culture and artifacts. At the same time you'll have fun learning about Kenya in the company of people who enjoy the same interests as you.

Become a KMS member and enjoy:

- Free entry to all National and regional Museums, prehistoric sites and monuments in Kenya
- Birds walk with Nature Kenya at Ksh 200, reduced rates on tree walks with FoNA, day and weekend outings, evening lectures, films and other programs for members
- Entry to the Oloolua Nature Trail at half price
- Monthly newsletter **Tracker** to keep you abreast of KMS and Museum activities
- Email updates on KMS and Museum activities
- Annual magazine **Kenya Past and Present**
- 5% discount on books in the KMS Shop at Nairobi National Museum
- Free borrowing privileges at KMS library
- Free reading privileges at Nature Kenya/NMK library
- Reduced advertising rates in the Tracker & Kenya Past and Present

Single resident	KSH 1,500	One membership card
Family resident	Ksh 2,000	Including children below 18 Yrs
Students (Kenyan Resident)	Ksh 300	One membership card
Up Country (New Category)	Ksh 1,200	One membership card
Non Resident	USD 50	One card
Visitors (valid for one month only)	Ksh 800	One membership card
Business Membership (Kenya)	Ksh 6,000	Eight membership cards

Payment: Mpesa Paybill, Business No: 400800, Account No: 6571570019

Contact: 0724 255 299, 2339158 or info@kenyamuseumsociety.org

LOOKING FOR ART IN KENYA?
Let your journey start here...

The
museum art
shop

Easing your access to art: Over 100 years old traditional art collection, the Creativity Gallery, contemporary art, temporary exhibitions, art education programmes, Art Club, guided visits...

Creativity Gallery, Nairobi National Museum, Museum Hill
Tel +254 3742131/61/62/63, PO Box 40658 00100 Nairobi,
art@museums.or.ke, www.museums.or.ke



Navrang Fine Arts Foundation presents:

SAT GATI (THE SACRED PATH)

A DANCE PROGRAM
BY THE PUNYAH DANCE COMPANY

Choreographed by: Parshwanath Upadhye

Accompanied by:

Matangi Prasan, Preethi Bharadwaj

Sneha Devanandan, Shruti Upadhye

Adhithya Pattuvanmare & Light Design by Vijay Chandra



Oshwal Auditorium (Opposite Ukay Centre), Nairobi

Saturday, 7th October 2017 at 8:30pm

(Guests to be seated by 8:15pm)

Tickets available from 11th September 2017 from

Shah Chemists, Ground Floor - Sarit Centre

Stalls: kshs. 3,500 and kshs. 3,000

Balcony: kshs. 1,500

0738-251-989



www.navrangfinearts.org

EAST FM

The Asian
community